

Move/3500

Managing all payment types,
in every location



- Process easily payment on the spot through a compact portable terminal
- Make NFC payment a seamless consumer experience
- Bring mobile payments to your POS via a hyper-connected terminal



ingenico



A smooth payment experience while on-the-go



3.2" color touchscreen and ergonomic interface

Payment anywhere and anytime

- 4G, 3G, GPRS, Dual SIM, Bluetooth and WiFi

Multiple alternative payment methods supported

- EMV Chip & PIN, contactless, magstripe or digital wallets

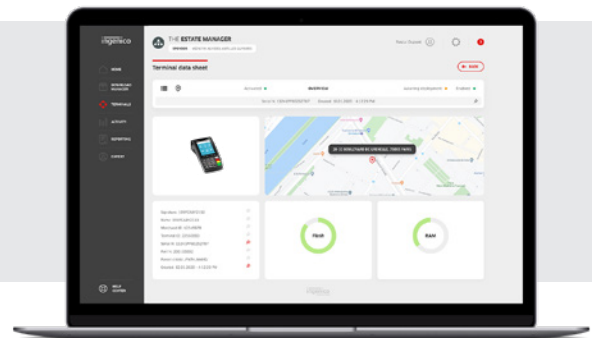
Fast integrated printer

Long-lasting battery for the lengthy working day (up to 2900mAh)

Raising the bar on security with PCI PTS compliancy

Supported by Ingenico's suite of services

- Fleet management & security solutions
- Hardware services
- Professional services



Processor	• Application & Crypto processor	• Cortex A5	✓
Memory	• Internal • External	• 256 MB Flash, 128 MB RAM • 512 MB Flash, 128 MB RAM • MicroSD up to 32GB	✓ Option
OS		• Telium TETRA	✓
SIM		• 2 SIM	Option
SAM		• 2 SAM • 3rd SAM	Option
Card readers	• Magstripe • Smart card • NFC/Contactless	• ISO 1/2/3, 500K lifespan • EMV Level 1, 500K lifespan • EMV Level 1 compliant	✓ ✓ ✓
Data capture	• GPS	• GPS tracking	Option
Display	• Colour	• 3.2" backlit, QVGA (320x240 pixels)	✓
Keypad		• 20 keys, raised marking, backlit	✓
Audio	• Buzzer		✓

Thermal Printer	• Speed in lines/s • Paper roll cage	• up to 30 lines/s • 58 mm width x Ø 40 mm	✓ ✓
Terminal connectivity	• WAN • LAN • Multicom	• 4G and/or 3G with fallback • WiFi and/or Bluetooth • WAN + LAN	Option Option Option
Terminal connections	• USB	• Host & Slave • Dedicated power Jack	✓ ✓
Battery	• Li-ion	• 2200mAh • 2900mAh	✓ Option
Terminal size		• 169x78x57 mm (6.6x3.1x2.2")	✓
Weight	• Terminal + Battery	• 320 g (11 oz)	✓
Environment	• Operating Temperature • Storage Temperature • Operating Humidity	• -10°C to +40°C (14°F to 104°F) • -20°C to +55°C (-4°F to 131°F) • 85% non-condensing at +40°C (104°F)	✓ ✓ ✓
Accessory	• Privacy shield • Car Charger • Docking-station	• Factory Mounted • Charger • 2 RS232 • USB Host • USB Slave • Modem • Ethernet 10/100 Base T • Bluetooth	Option Option ✓ Option Option Option Option
Security		• PCI PTS 5.x online & offline certified	✓

